

We know it has been a long day!

Update Methodology Paper: How to ensure feasible targets

Bernhard Schausberger, Daniela Minichberger | Interact | 05.03.2024, 16.00 – 17.00

Interact



**Co-funded by
the European Union**
Interreg

Welcome to the Interreg Knowledge Fair

This is the **second edition** of the Interreg Knowledge Fair, it is still a new approach for us.

The **Conference Support** stand in the Exhibition Room is a one-stop shop for your questions.

At the end of this session, you are asked to rate the **session experience**.

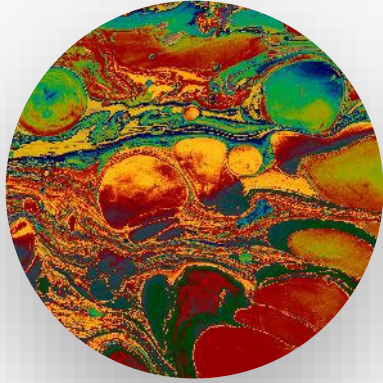
At the end of the event, you will be asked your **overall feedback**.





Objective

- Evaluate current programme status concerning indicators to ensure alignment with targets.
- Explore the potential update of Methodology Papers raising the question of programme modifications.



The **Methodological Document** serves as a comprehensive guide detailing crucial aspects of the programme **intervention logic**, the **indicators** and **the calculation of targets**.

A kind of institutional memory

Understanding the Methodological Document?

Legal citation
CPR,
Art. 16

Performance framework

1. Each Member State shall establish a performance framework to allow monitoring, reporting on and evaluating programme performance during implementation of the programme, and to contribute to measuring the overall performance of the Funds.

The performance framework shall consist of:

- a. output and result indicators linked to specific objectives set out in the Fund-specific Regulations selected for the programme;
- b. milestones to be achieved by the end of the year 2024 for output indicators; and
- c. targets to be achieved by the end of the year 2029 for output and result indicators.

2. Milestones and targets shall be established in relation to each specific objective within a programme, with the exception of technical assistance and of the specific objective addressing material deprivation set out in point (m) of Article 4(1) of the ESF+ Regulation.

3. Milestones and targets shall allow the Commission and the Member State to measure progress towards the achievement of the specific objectives. They shall meet the requirements set out in Article 33(3) of the Financial Regulation.

Understanding the Methodological Document?

Legal
citation
CPR,
Art. 17

Methodology for the establishment of the performance framework

1. The methodology to establish the performance framework shall include:
 - a. the criteria applied by the Member State to select indicators;
 - b. data or evidence used, data quality assurance and the calculation method;
 - c. factors that may influence the achievement of the milestones and targets and how they were taken into account.

2. The Member State shall make the methodology to establish the performance framework available to the Commission on request.

Understanding the Methodological Document?

- COMMISSION STAFF WORKING DOCUMENT
Performance, monitoring and evaluation of the European Regional Development Fund, the Cohesion Fund and the Just Transition Fund in 2021-2027, Brussels, 8.7.2021 (especially point 3.2, p.5f)
- Q&A Intervention Logic (IL) and methodology paper (Interact library)
- Thematic Network 'Results and Evaluation': examples of methodology paper from different programmes, discussion and interpretation of certain indicators

(5) Final remarks

- The targets should be representative for the full budget of the programme
- The use and definition of indicators to be explained to beneficiaries
- Start reflecting on how to collect the data for the result indicators
- Keep track of the changes in the assumptions used for setting targets

Target calculation based on ...

- Project size from previous period often used as key element combined with assumptions of shares of projects performing according to plan
- Broader set of historical programme statistics (partner & participation numbers per project/ action, quantitative assumptions on causal link from project to pilot action, strategies & action plans delivered in 07-13 and 14-20, organisations cooperating per MEUR project volume etc.)
- More broad-brush approach: benchmark at programme level 14-20 & 21-27, calculations along comparable indicators & project types
- For ERDF indicators a variety of more technical parameters has been used, e.g. methods using average population densities etc. to calculate population having access to green infrastructure (using ha of green infrastructure as point of departure), average cost per ha of rehabilitated land ...

Target calculation & inherent risks ...

Project size as point of departure

- Project size: risk of under- or overestimation,
- Small-scale projects as new feature
- Inflation: obvious impact on project sizes, particular risk related to construction activities or indicators based on cost per ha

Force majeure

- Crisis similar to COVID or Russian aggression impacting performance heavily

Testimonials Interreg programmes

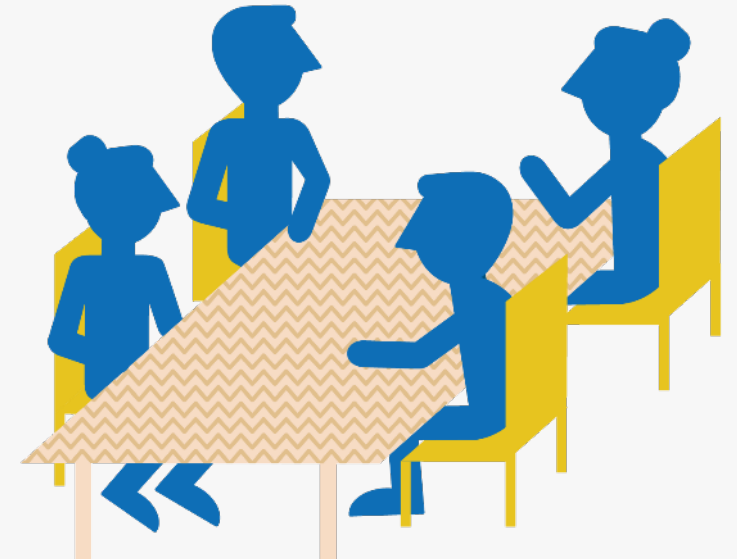
Programmes (with investments): Experience when setting targets? Impact of inflation on targets? Other aspects that might influence initial assumptions?

- Martin Buršík: Interreg CZ-PL
- Sandra Tavares da Silva: Interreg Atlantic
- Kirsti Mijnhijmer: Interreg NPA,
- Nuno Madeira: Interreg Alpine Space



Floor is open for discussion

- Which changes in targets, outputs, results did you encounter in your programme?
- How to weight and profile indicators & targets in discussion with MC (e.g. for selection)
- Do you plan any adjustment of methodologies? What to factor in?
- Do you plan any amendment of your programme? If so - why?



Thank you for being here!

Your opinion matters to us.

Please take a few minutes to provide us with feedback to help us improve our services.

Log into the **Whova app** and tell us what you think in the **session Q&A, from 1 (bad) to 5 (amazing)**

Please check which session you are in!

You can also talk to us at the Conference Support stand in the networking area.



Cooperation works

All materials will be available on:

[Interact / Events / Interreg Knowledge Fair \(5-7 March 2024\)](#)