



Growing interest in FIs among Interreg programmes

Interact online event 18/11/2020

Wilde PETRONE, Finance officer, Interreg 2 Seas

Content

- Introduction
- Preconditions
- Interests
- Challenges

Disclaimer: This presentation only reflects the Joint Secretariat's opinion.

Introduction

- CBC Programme
- 2 generations
- 4 Member States

82

Approved
Projects

864

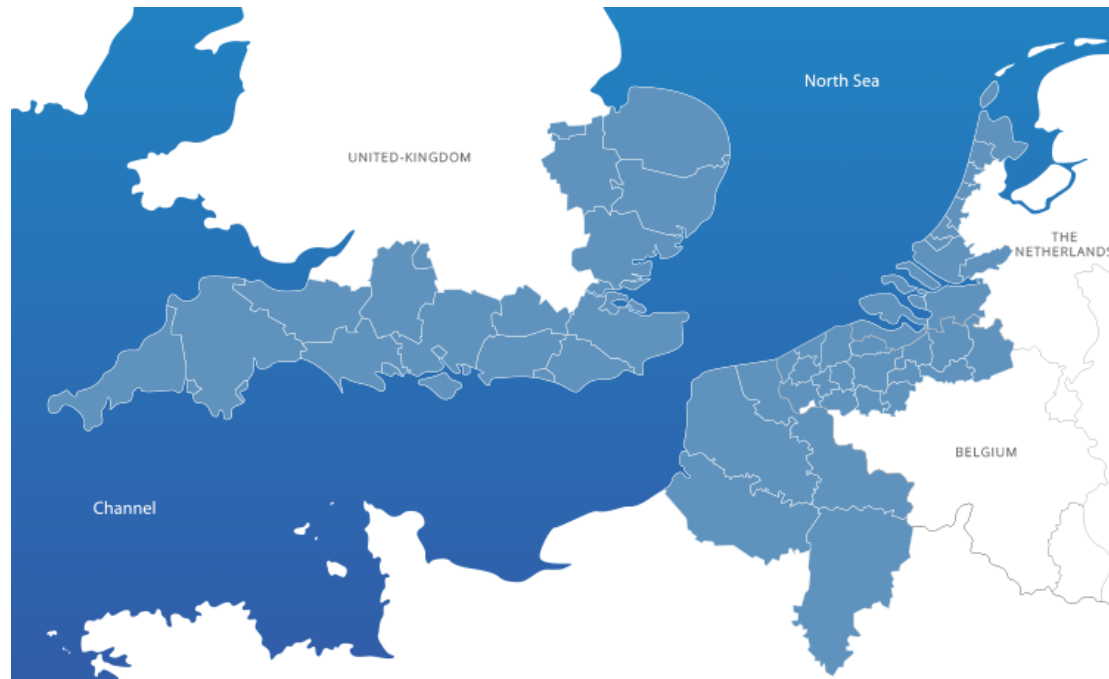
Organisations

ERDF committed

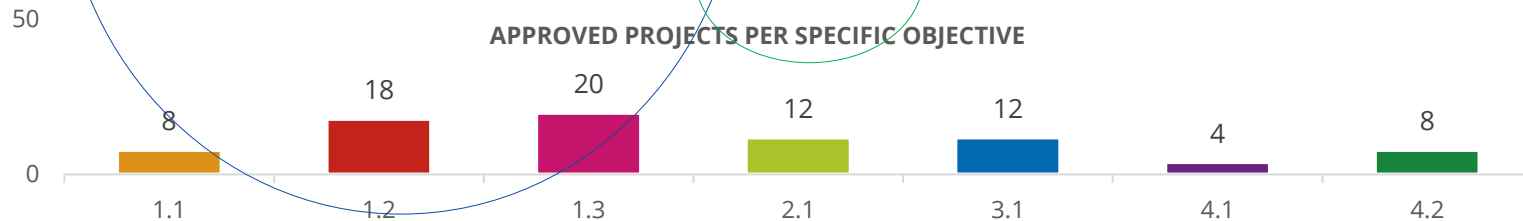
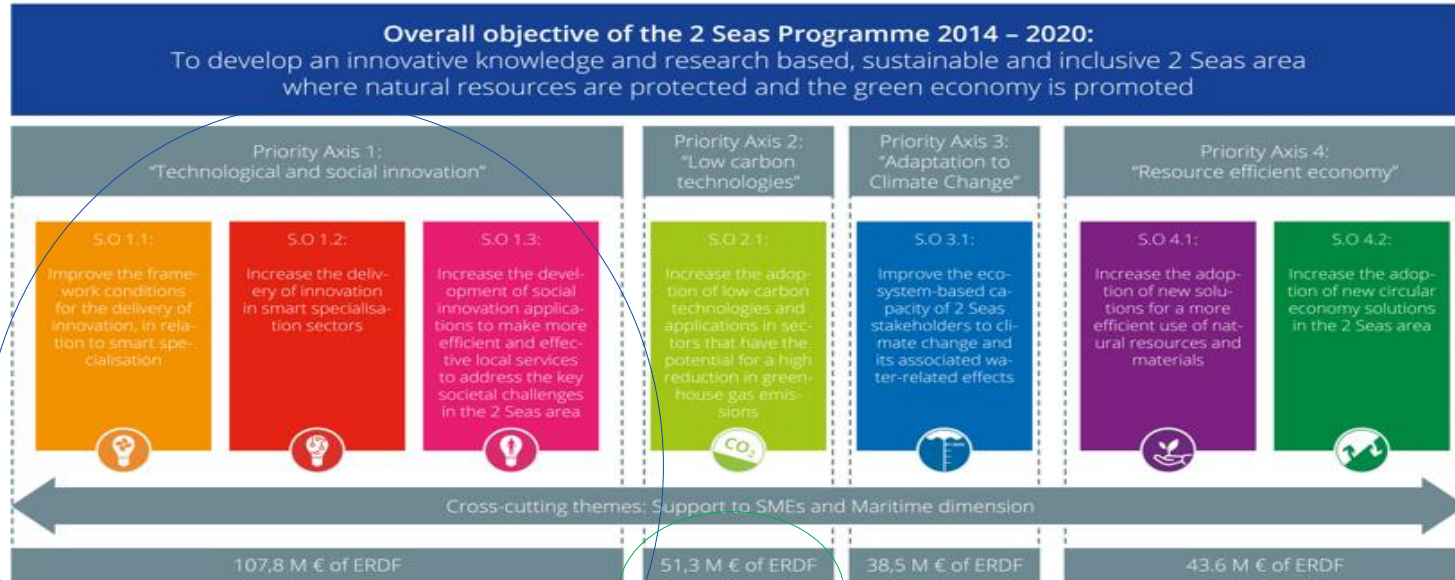
€256 m

€0

ERDF available



Introduction



Introduction

- Innovation and energy efficiency focus
- Cooperation typology (3&4 helix)
- Increased involvement of SMEs (4 → 102)
- Force SMEs to hold sufficient and available liquidity

Fitting preconditions for FIs

- **Compatibility with Programme needs and territories**
 - Innovation & energy efficiency projects, involvement of SMEs, etc.
- **Open-mindedness at all levels**
 - Acceptance of a new dynamic within Interreg (grants vs. FIs)
 - Provide opportunities for previously involved organisations
 - Attract new organisations not initially interested in grants
- **Anticipation**
 - Timely analysis of available FIs structure and mechanisms

Interests in FIs (JS perspective)

- Revolving nature
- Only economically viable projects!
- Attractivity from diverse funders (public & private)
- Burden decrease on audit and control for recipients
- Expertise available (within MA's region and FI Compass)
- Revamp Interreg funding mechanisms!

Challenges for FIs

- Analysis, justification and ex-ante assessment (go / no go)
- Numerous instruments
- Additional technical knowledge within TA
- Establish and laid down new processes (internal, delegation or entrustment)
- Time constraints vs. drafting the OP

Conclusion

- Clear interest from the 2 Seas JS in FIs
 - Possibly loans and guarantees (to be defined)
 - Entrustment of the EIB
- **But.. no future decided yet!**
 - No decision on the involved territories, budget envelope and priorities!

Contact

Thank you for your attention.

Any questions?

Wilde PETRONE
JS 2 Seas

Email: w.petrone@interreg2seas.eu

Tel: +33 3 20 21 84 92