

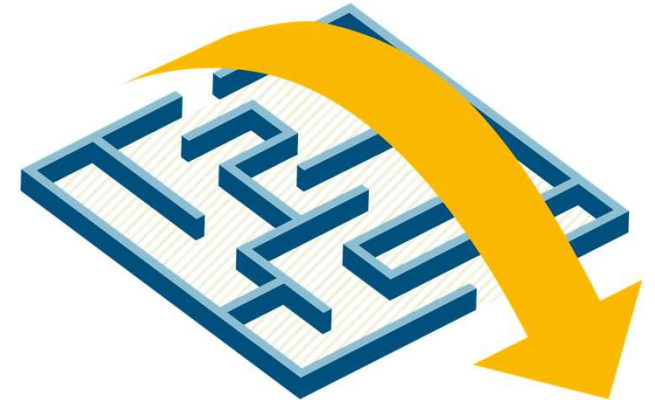
Focus on Selection!

The process

19 May 2022 | Online, Zoom

Welcome!

DG Regio (Units D1+D2), Interact



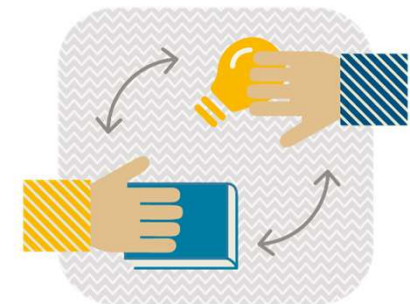
Why are we here?

Objectives

- Hear and share reflections on assessment and selection processes
- Collect your questions, doubts and concerns
- Search for answers, solutions and common sense

Format

- Almost 4 hours (sorry! ... it is important!!)
- N° participants <-> interactivity



Housekeeping

- Please rename yourselves and add an indication of your programme
- We will record the meeting! (camera Y/N?)
- Stay 'muted' unless talking
- For the break out rooms: Contribute & share (any idea is welcome!)
- Be patient with others
- Questions/contributions: use Slido!

No questions in
the chat please!

slido

Use this code: #2913418



Agenda May 19

When? (CET)	What?	Who?
09.30 – 09.45	Welcome!	DG Regio (D1+D2) Interact
09.45 – 10.45	Assessment work	Colleagues from CZ-PL, Aurora, South Adriatic Interact
10.45 – 11.15	Preparation of decision making	Same
11.15 – 11.30	Comfort break	All 😊
11.30 – 13.00	Decision-making	Interact, DG Regio, All
13.00 – 13.15	Wrap-up and closure	DG Regio, Interact

Listening to practitioners

Jan Pikna, Maciej Molak (Czech Republic – Poland)

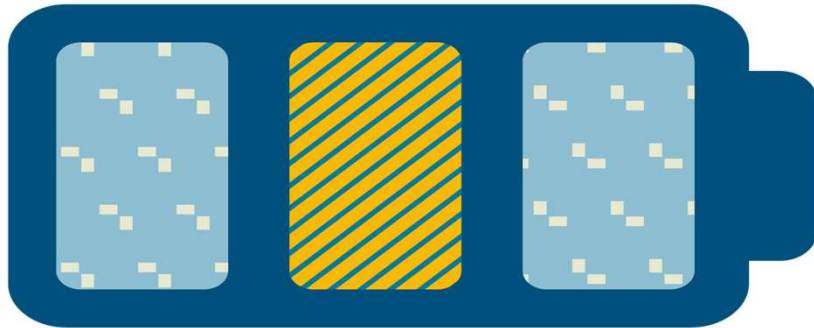
Gabriel Bölske (Aurora)

Chiara Campanile (South Adriatic)

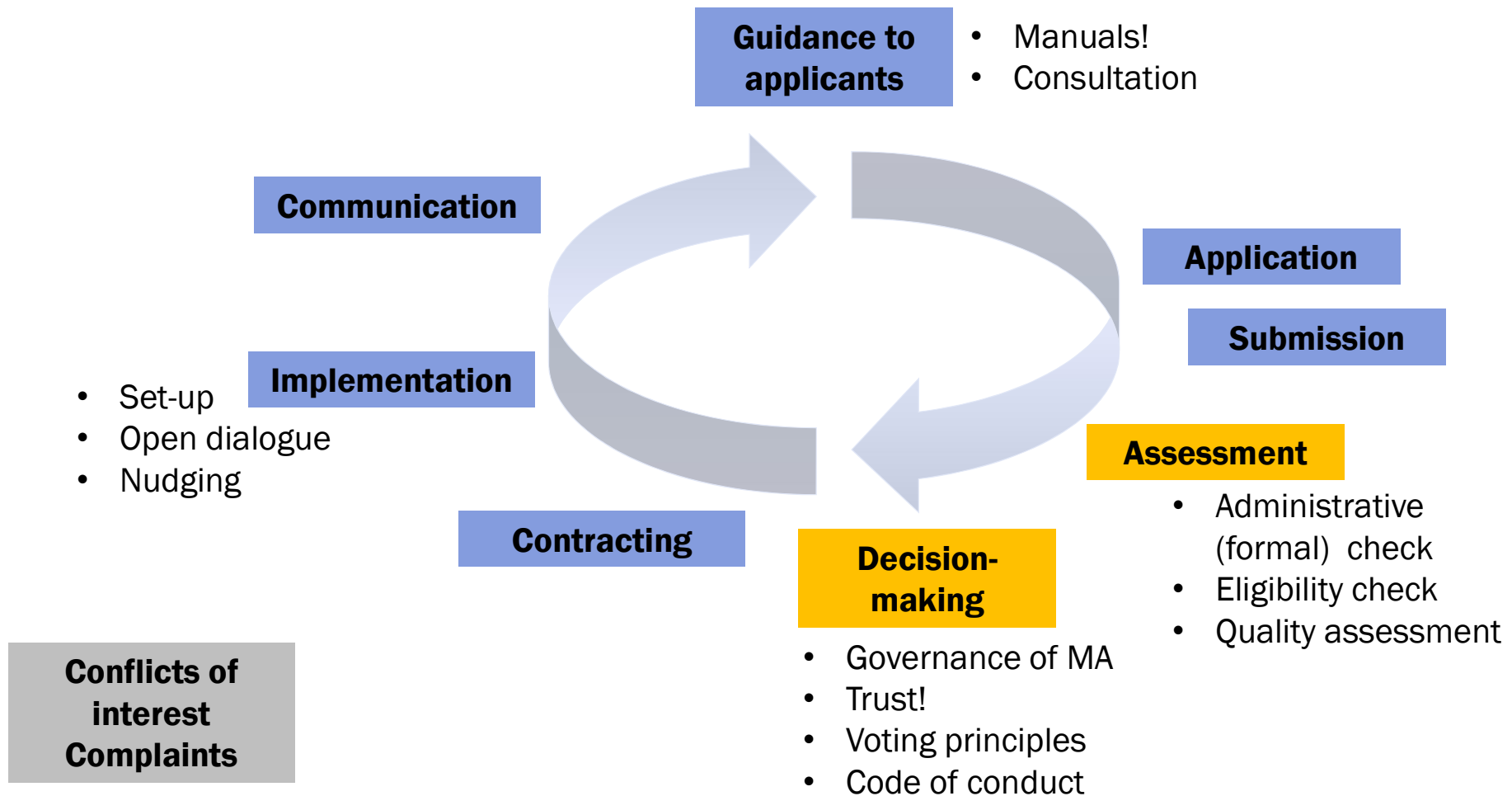
Nicolas Singer (Interreg Europe)

Assessment work

And the human factor ...



Project Management Cycle (PMC)



Quality assessment grid – criteria

Type of criterion	Criteria
Strategic criteria	<ul style="list-style-type: none"> • Project relevance • Partnership relevance • Cooperation character • Project intervention logic • Sustainability, durability and transferability
Operational criteria	<ul style="list-style-type: none"> • Work plan • (Lead) partner(ship) capacity • Communication • Budget

Assessment: Overarching factors

We see the following key factors shaping the approach ...

Calls

- For the whole programme or per priority /SO
- Financial limit per call

Number of applications

- High numbers and critical path: time required for in-depth fully-fledged assessment with reasonable number of assessors (otherwise coordination and consolidation becomes quite complex)

Assessors

- Internal or external or combined; cost for external expertise!

Stage in the programming cycle

- Views on assessment/selection/projects in the beginning of the programme might change over time until the 'last call for orders'

Focus on quality assessment

Diversity of approaches across programmes

- Strategic and operational criteria – weight of those
- Per criterion – heading plus sub-questions (depending on the context of the programme, can be rather general or more detailed ...)
- Scoring (e.g. 1 to 20 pts or L-M-H) or scoring plus written justification
- Use of k.o. criteria (if score is=0 -> k.o.; project is out – e.g. cooperation character), minimum thresholds
- Aggregate scores or profiles
- One approach for all SOs or different sub-questions according to SO
- One or several assessments per project – if several consolidation ...
- Technical checks for infrastructure documents (requiring technical expertise!!)

Specific checks

Partner capacity

- Eventually involvement of National Authority (NA), regional representatives or National Contact Points (NCPs)

Infrastructure

- Technical checks for infrastructure documents (requiring technical expertise!!)
- Climate resilience / impact on climate (Article 22.4j)

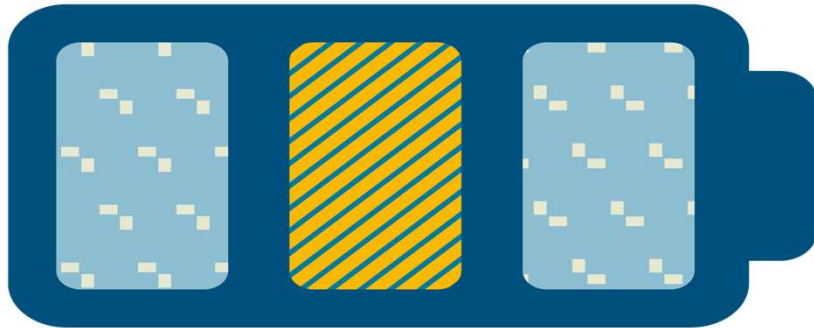
Challenges

Exemplary challenges ...

- Biased view of assessor(s); small pool of external assessors; knowing not enough or knowing too much ...
- Time pressure
- Influential persons
- Weight of the assessment in MC – motivation!
- Assessing value for money (lack of benchmarks; detailed budget)

Preparation of decision-making

Next step on the pathway to decision-making ...



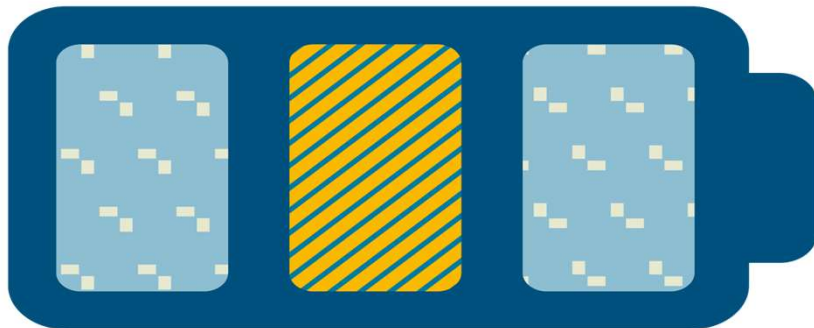
Preparation for decision-making

Diversity of approaches across programmes

- Weight of assessment / ranking list for decision-making as key factor!
- Transparency: Crisp and concise information but option to see all documents for MC – more challenging when having high project numbers
- Sometimes ambiguous role of national committees (good for testing waters but might strengthen unilateral perspective); traffic light system might turn into pre-decisive instrument
- Role of match-funding in federal states (commitment, conflict of interest)

Decision-making

The decisive step ...



Decision-making: Overarching factors

We see some critical factors shaping the approach ...

Number of Member States sharing the desk

- Transnational & interregional programmes
- Cross-border programmes

Voting principle

- Consensus, majority, delegation

Financial limits per call

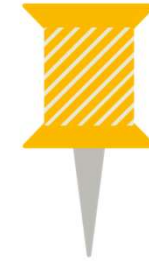
- Magic of the line – handling of projects close to it

Wider partnership

- Asset in terms of broader view and expertise – in practice hardly used

Decision-making

Aspect	Options & considerations
Voting principles	<i>Consensus</i> <i>Qualified majority (e.g. two thirds)</i> <i>Majority</i>
1 delegation – 1 vote	<i>Consensus</i> <i>Majority</i>
Role of the MA	<i>Chair (often rotating)</i> <i>Neutral (evt. critical - link to match-funding)</i> <i>Right to veto (infringement of EU rules)</i>
Conditions for approval	<i>Limit to conditions</i>
Rejection	<i>Commitment of MC to arguments for rejection</i>
Written procedure for approval	<i>Clear limits since it lacks option for exchange</i>



Upcoming events

When?	What?	Where?
Before summer	Art. 22.4j): Collecting ideas	Online
June 1	New European Bauhaus for Interreg	Online

Cooperation works

All materials will be available on:

www.interact-eu.net

