

Fact Sheet

ENPI CBC South East Finland - Russia Programme

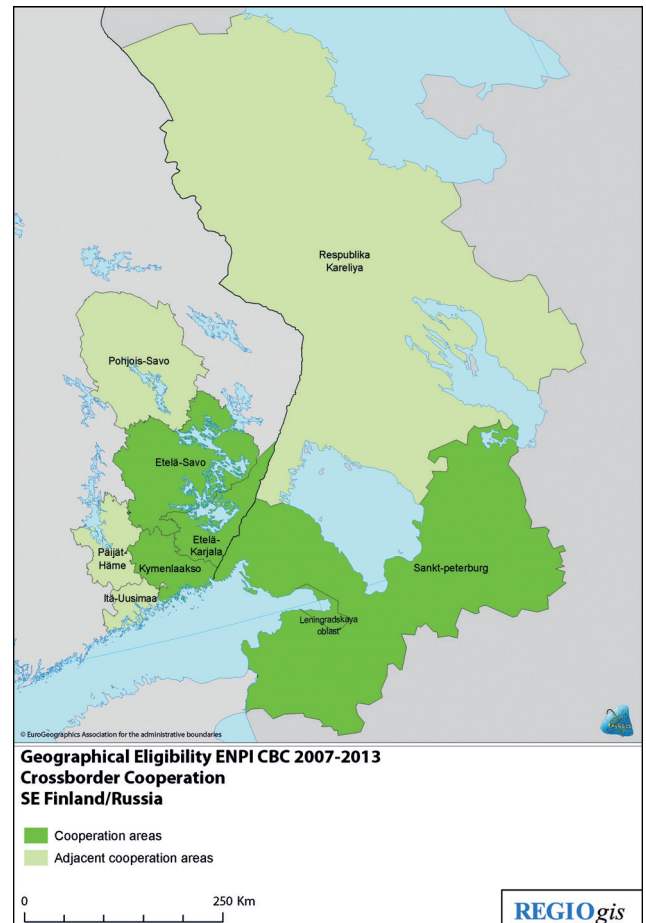
TOTAL EU ALLOCATION (2007-2013):
36.185 million EUR

ELIGIBLE REGIONS:

Finland: South Karelia, Kymenlaakso, South Savo;
 adjoining areas: Northern Savo, Päijät-Häme, Itä-Uusimaa

Russia: Leningrad Oblast with St Petersburg;
 adjoining areas: Republic of Karelia

The strategic objective of the programme is to promote the position of the programme area as an integrated economic zone and a centre for transportation and logistics in order to strengthen its competitiveness and attractiveness to investors, and to improve the state of the environment and the standard of living and welfare of its citizens. The programme will contribute to the transfer of competence and the flow of goods, passengers and information, as well as the diffusion of innovation over the border, and provide ground for common actions to improve the environment.



Source: European Commission

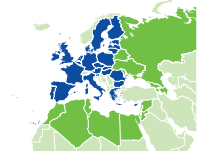
PRIORITIES:

1. Economic development:

to strengthen local and regional sustainable economic development in the programme area - SME and business development, incl. labour market development; trade and investment promotion; transport and logistics; research and education; innovations and technology; energy cooperation; tourism industry; rural development

2. Common challenges - border-crossing and the environment:

- Efficient and secure borders - to develop transport links and improve the operations of the border crossing points; effective (facilitating bona fide cross-border traffic of persons and legitimate trade and transit) and secure border management (preventing illegal border-crossing and illegitimate trade and transit, and combating organised crime, trafficking, and contraband); strengthening of maritime search and rescue services in the area; supporting activities that promote emergency preparedness and cooperation between local and regional authorities and organisations in order to minimize risks.



Fact Sheet

ENPI CBC South East Finland - Russia Programme

- Environment and nature protection - sustainable waste management; improve infrastructure for waste management and waste water treatment; protection of natural heritage.
3. **Social development and civic society:**
to strengthen people-to-people and civic society contacts at regional and local levels in the educational, cultural, and other similar fields, as well as to enhance cross-border contacts between civic society groups and NGOs in view of promoting local governance and mutual understanding.

STATE OF PLAY:

The programme was submitted to the Commission end of June 2008. A Commission decision is expected to be taken before the end of 2008 pending the final approval of the programme document by the partner country. Thereafter a call for proposals will be launched by the Joint Managing Authority. The first projects are expected to start in 2009 provided the partner country has signed the Financing Agreement.

CONTACT DETAILS:

Joint Managing Authority
Regional Council of South Karelia
Päivi Ilves
Programme Director
Kauppakatu 40 D
FI-53100 Lappeenranta
t: +358 40 5586 011
paivi.ilves@ekarjala.fi

Web site:

<http://www.southeastfinrusnpi.fi/>

