

Fact Sheet

ENPI CBC Poland-Belarus-Ukraine Programme

TOTAL ALLOCATION (2007-2013):
186.201 million EUR

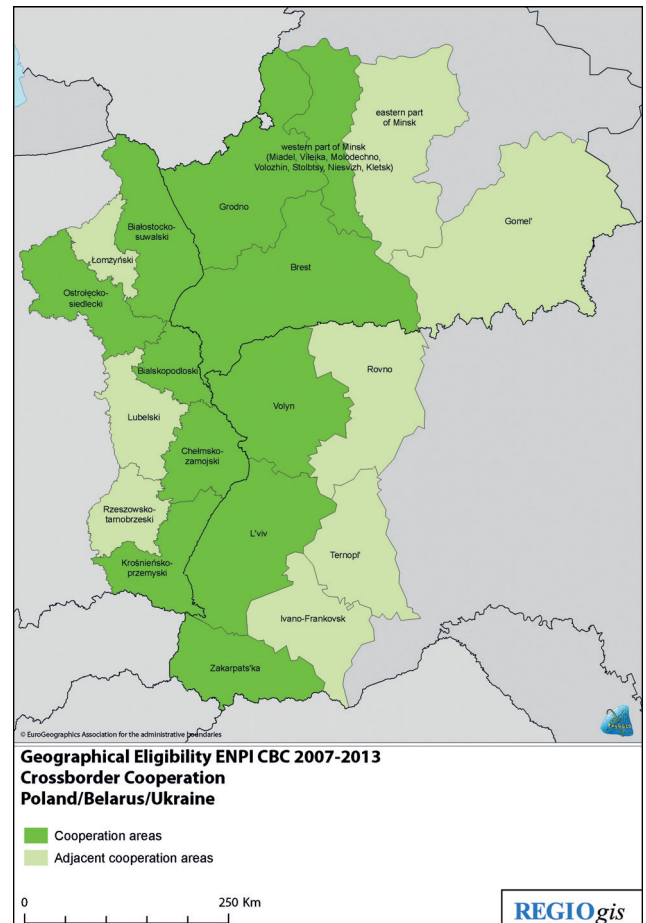
ELIGIBLE REGIONS:

Poland: Białostocko-suwalski, Ostrołęcko-siedlecki, Białkopodlaski, Chelmsko-zamojski, Krosniensko-przemyski (adjoining regions: Lubelski, Rzeszowsko-tarnobrzescski, Lomzynski)

Belarus: Hrodna and Brest oblasts, western part of Minsk oblast [Miadel, Vileika, Molodechno, Volozhin, Stolbtsy, Niesvizh and Kletsk districts] (adjoining regions: eastern part of Minsk Oblast, Gomel Oblast)

Ukraine: Volynska, Lvivska and Zakarpatska Oblasts (adjoining regions: Rivnenska, Ternopilka Oblasts and Ivano-Frankivska Oblasts)

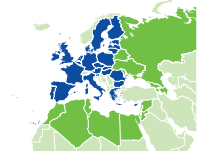
The core objective of the programme is support for cross-border development processes. The programme objectives will be realised through non-commercial projects implemented within the following priorities and measures.



Source: European Commission

PRIORITIES:

1. **Increasing competitiveness of the border area including:**
 - Better conditions for entrepreneurship (Measure 1.1);
 - Tourism development (Measure 1.2);
 - Improving access to the region (Measure 1.3).
2. **Improving the quality of life including:**
 - Natural environment protection in the borderland (Measure 2.1);
 - Efficient and secure borders (Measure 2.2).
3. **Networking and people-to-people cooperation including:**
 - Regional and local cross-border cooperation capacity building (Measure 3.1);
 - Local communities' initiatives (Measure 3.2).



Fact Sheet

ENPI CBC Poland-Belarus-Ukraine Programme

STATE OF PLAY:

The programme has been submitted to the European Commission in June 2008; a revised version of the Programme, taking into account the EC's comments, has been sent to the EC on 10 October 2008. The programme was adopted on 6 November 2008. It is expected that the first Joint Monitoring Committee will be organised in the first quarter 2009. Thereafter the first call for proposals will be launched and it is expected that the first round of projects will be approved in the 3rd-4th quarter 2009.

CONTACT DETAILS:

Joint Managing Authority

Ministry of Regional Development (Poland)

Territorial Cooperation Department

Iwona Brol

Director of Territorial Cooperation Department

Justyna Jakubowska

Senior specialist in ENPI Unit - Desk officer

ul. Wspólna 2/4 00-926 Warszawa

t: +48 22 536 51 05 or +48 22 501 51 62

iwona.brol@mrr.gov.pl

justyna.jakubowska@mrr.gov.pl

Web site:

www.interreg.gov.pl/20072013/instrument+sasiedztwa/pl-bl-uk/

